

Creating a Healthy Community Led by Public Health Nurses

Sachi SAKATA

Department of Health Promotion Policy , Public Health Nurse Division
Japanese Nursing Association



生きるを、ともに、つくる。
公益社団法人 日本看護協会



Faculty Disclosure

✓	No, nothing to disclose
	Yes, please specify:

<i>Company Name</i>	<i>Honoraria/ Expenses</i>	<i>Consulting/ Advisory Board</i>	<i>Funded Research</i>	<i>Royalties/ Patent</i>	<i>Stock Options</i>	<i>Ownership/ Equity Position</i>	<i>Employee</i>	<i>Other (please specify)</i>



Characteristics of Public Health Nurse in Japan

Public Health Nurse(PHN) - a national qualification

《1941 : Public Health Nurses Ordinance enacted》

《1948: Act on Public Health Nurses, Midwives, and Nurses enacted》

Public Health Nurse is

- a person who has acquired a license from the Minister of Health, Labour and Welfare to use the title of 'Public Health Nurse' and provides health guidance as a profession.
- 'Public Health Nurse is an exclusive title'.



Characteristics of Public Health Nurse in Japan

Over 70% of Public Health Nurses work in local governments

« 1937: Public Health Center Act enacted »

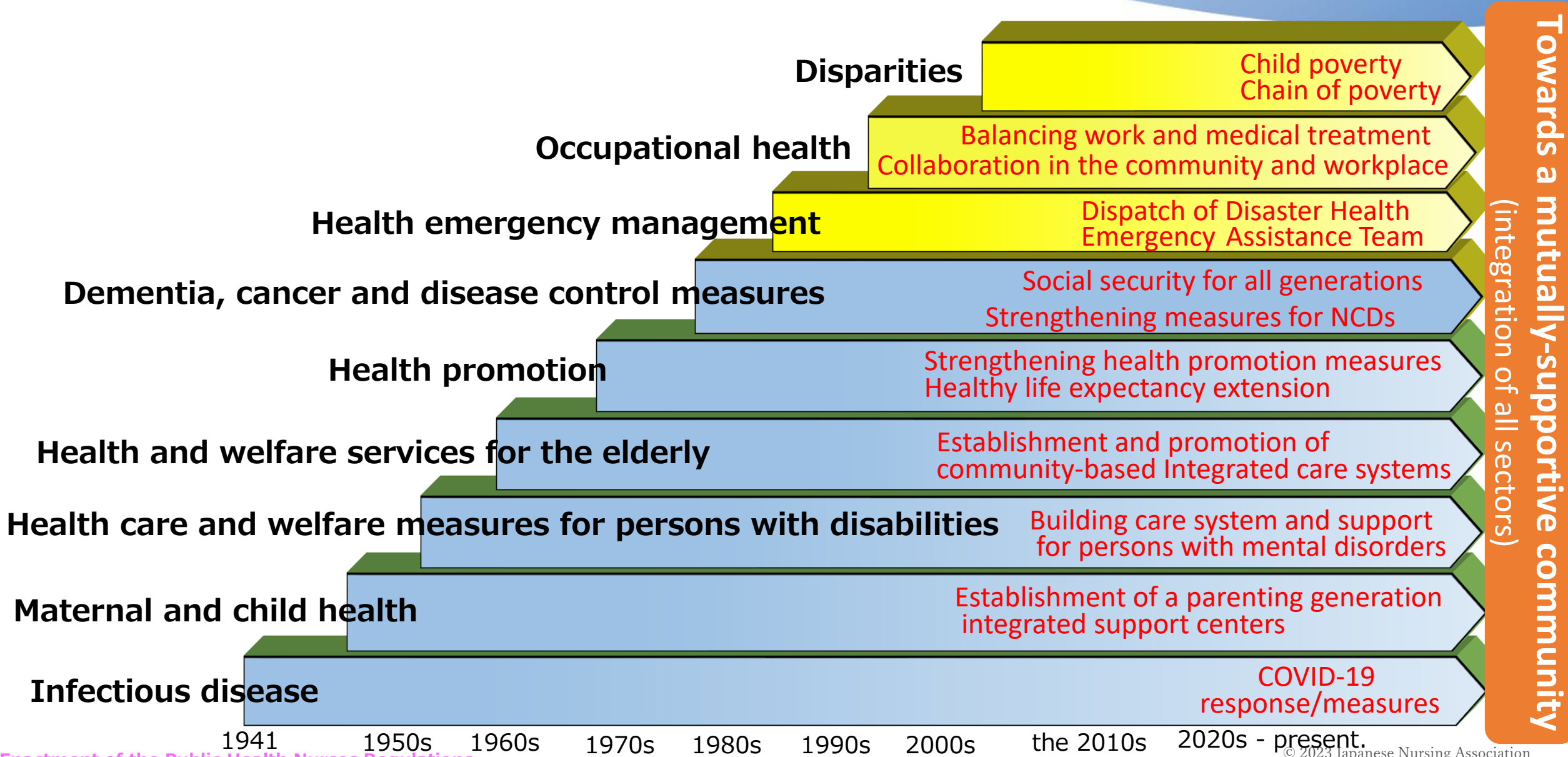
Establishment of health centers and stipulated their role

→ 1947

Public health centers strengthened as frontline institutions for public health with integrating administrative functions

Public Health Nurses work “in” and “into” the community
as public health professionals

Historical Changes of Health Issues and Measures in Japan



Towards a mutually-supportive community
(integration of all sectors)

1941 1950s 1960s 1970s 1980s 1990s 2000s the 2010s 2020s - present.

Role of Public Health Nurse in Health Issues and Measures



Point
1

Developing a series of activities that are appropriate to the times building on the activities that have been implemented so far

Point
2

Confronting complex and diverse health challenges adapting subjects and content of activities in response to social change

Point
3

With enactment of new or amended schemes, PHNs work with diverse changes in their own functions

**Contributing to the realisation of a mutually-supportive community
(UHC achieved and sustained)**



“Guidance on Health Activities by PHNs in Communities”

~ Basic Direction of Public Health Nurse’s Activities ~

- (1) Implement a PDCA cycle based on community assessment
- (2) **Expand viewpoints and activities from individual issues to community issues**
- (3) Emphasize preventive intervention
- (4) Strengthen activities grounded in community-based activities
- (5) Promote a system of area-based responsibility
- (6) Promote healthy community development in accordance with local characteristics
- (7) Coordinate and collaborate on cross-departmental public health activities
- (8) Establish community care systems
- (9) Establish and implement various health care and welfare service plans
- (10) Develop human resources

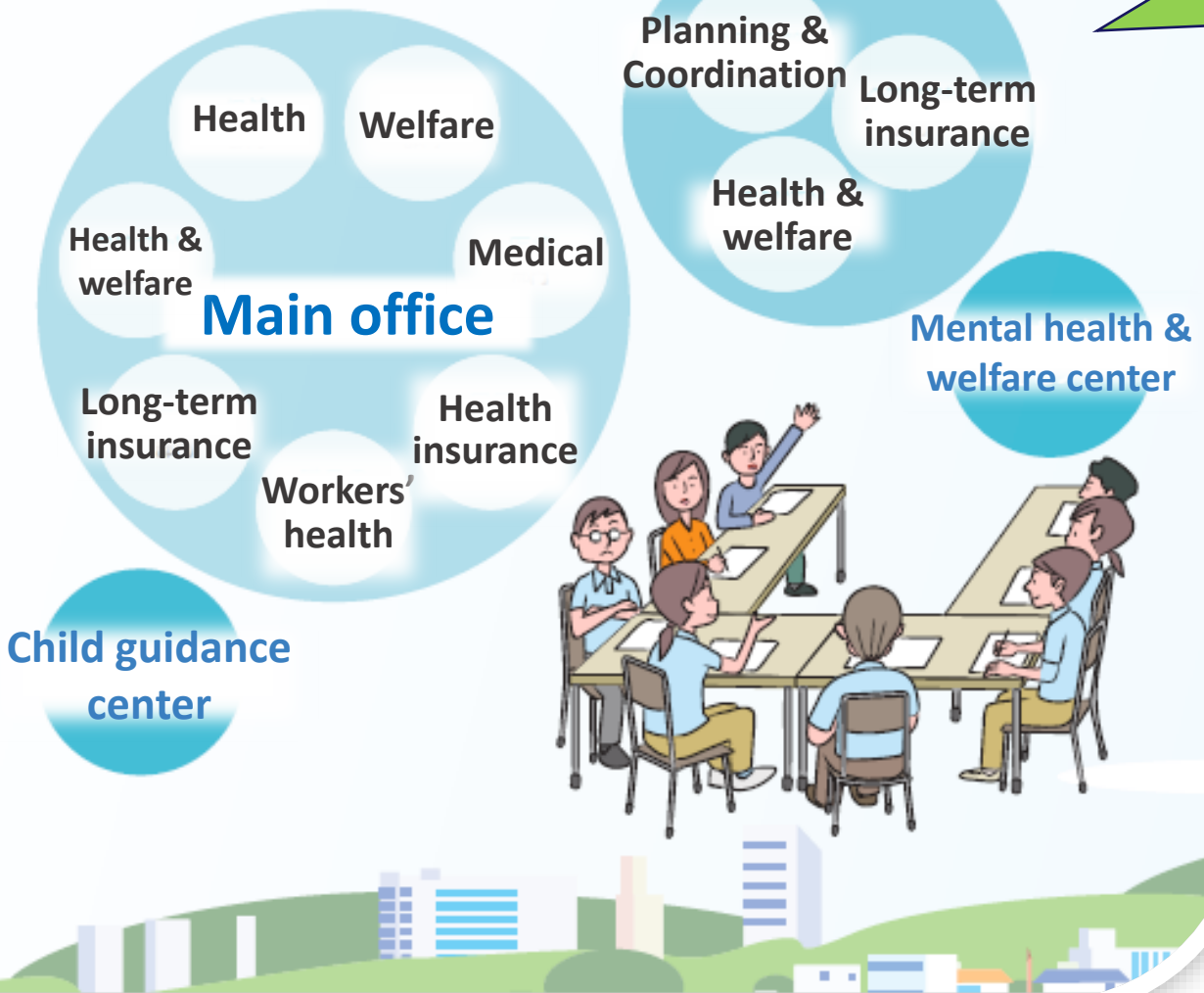
Locations of Public Health Nurse activities



Cooperation and Collaboration for the same local area

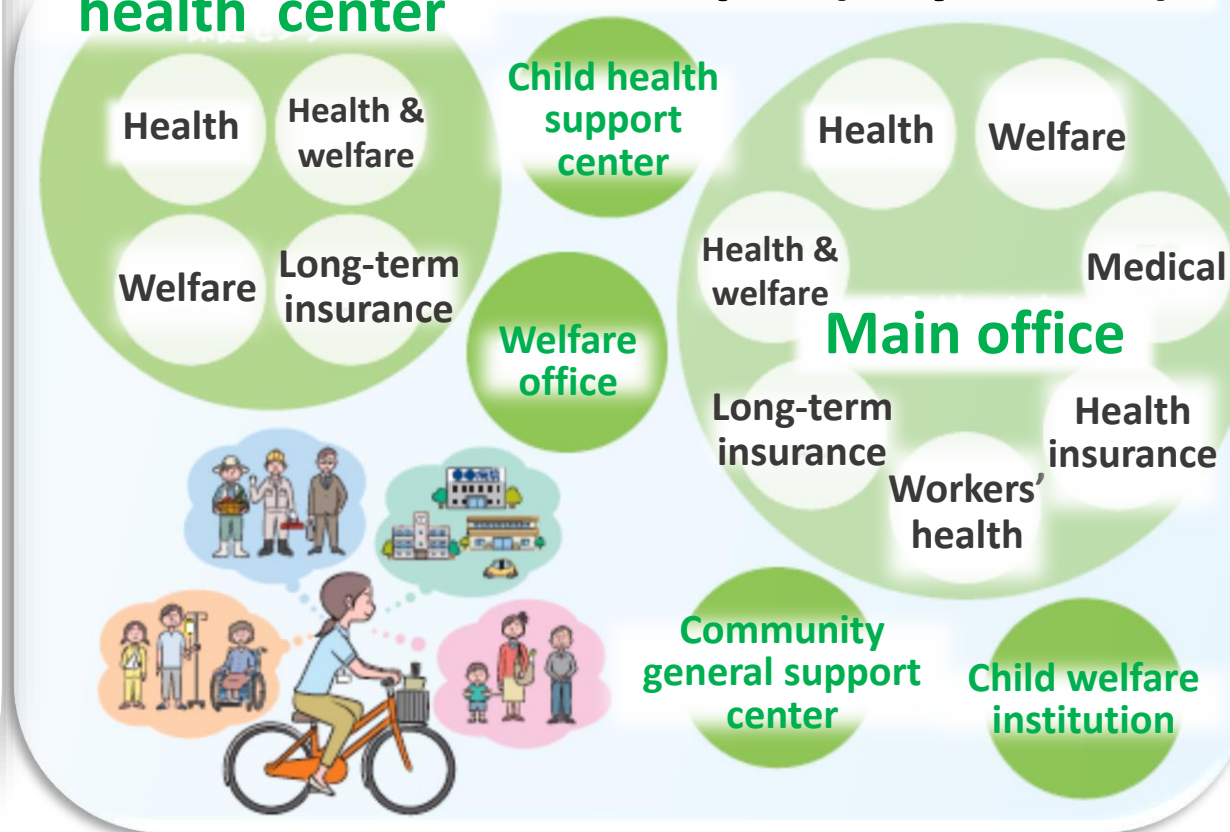
Prefecture

Public health center



Municipal health center

Municipal (city, town)



Role of Prefectural/Municipal Public Health Nurses



Role of Prefectural Public Health Nurses:

'Creating a wide-area system and environmental improvement'

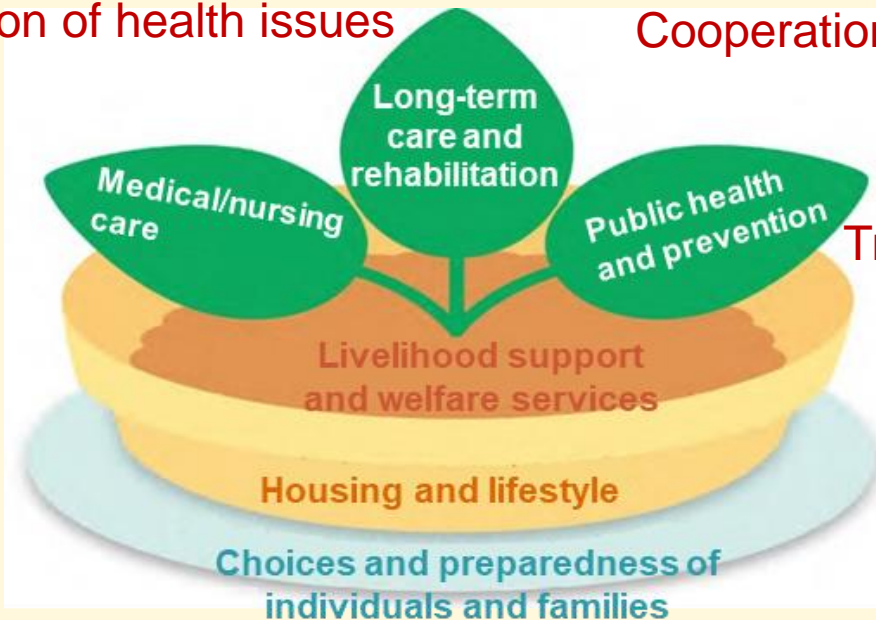
Role of Municipal Public Health Nurses:

'Creation and effective implementation of a system suited to the community'

Grasping the actual situation: Clarification of health issues

Cooperation and coordination

Development and implementation of health care and welfare service plans



Training (skill development)

Provision of public health services

Evaluation

Changing Social Needs & Health Challenges towards 2040



- Low birthrate and ageing society
- Declining population in an extraordinary level (shortage of health care personnel)
- Risk of vulnerability of health center functions due to decentralization, municipal mergers, and consolidation of health centers
- Health inequities (disparities between regions and social classes)
 - Young carer
 - Child poverty
 - Elderly Care by the Elderly
 - Health emergency management (burden on vulnerable groups) etc...



Current Challenges for Public Health Nurses

- expansion and promotion work of the policy development, health support projects, and care system establishment
- Increase in the number of eligible people in need of direct health care services
- Increase in administrative work related to health emergency management
- Recruitment and development of human resources
 - Effective health activities with limited human resources
 - Division of roles and cooperation between Public Health Nurses working in prefectures, health centers and municipalities
 - Improving the visibility and quality of Public Health Nurses' expertise
 - Development of postgraduate education for basic Public Health Nurse education

Demonstration of Competencies as Public Health Nurses



Solving individual problems with viewing them as community- and population-wide issues, seeking to achieve “organizational solutions”

Able to reflect the voices of community resources in various plans and policies

Collaborate with multiple professions and organizations



To analyze and assess community health issues quantitatively and qualitatively

Visualize the issues of invisible issues, and leading to solutions

Can see and know local individuals and stakeholders

Combine various approaches home visits, area organization activities, health education, health counseling

Future State of Public Health Nurses as a Profession



Acting as leaders/providers of health activities that contribute to effective health policy in the community

Working with responsibility, mission and pride in directly identifying and taking action to address local health issues

Providing high quality health activities to all citizens

Creation of healthy communities (achieving and sustaining of UHC)