

The Great East Japan Earthquake JNA activities and Preparedness for Future

Hiromi Sanada, PhD, RN

Vice-President

Japanese Nursing Association

May 20th, 2013

ICN 25th Quadrennial Congress





Outline of the presentation

1. Disaster preparedness before the Great East Japan Earthquake
2. JNA's activities for 2 years since the Earthquake
3. Preparations for the future



1. Disaster preparedness before the Great East Japan Earthquake



Japan: A land with frequent disasters

Due to geographically, topographically and meteorological conditions, Japan has many natural disasters, such as typhoons, heavy rains and earthquakes.

Physically felt earthquake in Japan
January –December 2012

3139

Source: Japan Meteorological Agency monthly report of earthquake and volcano, December 2012.



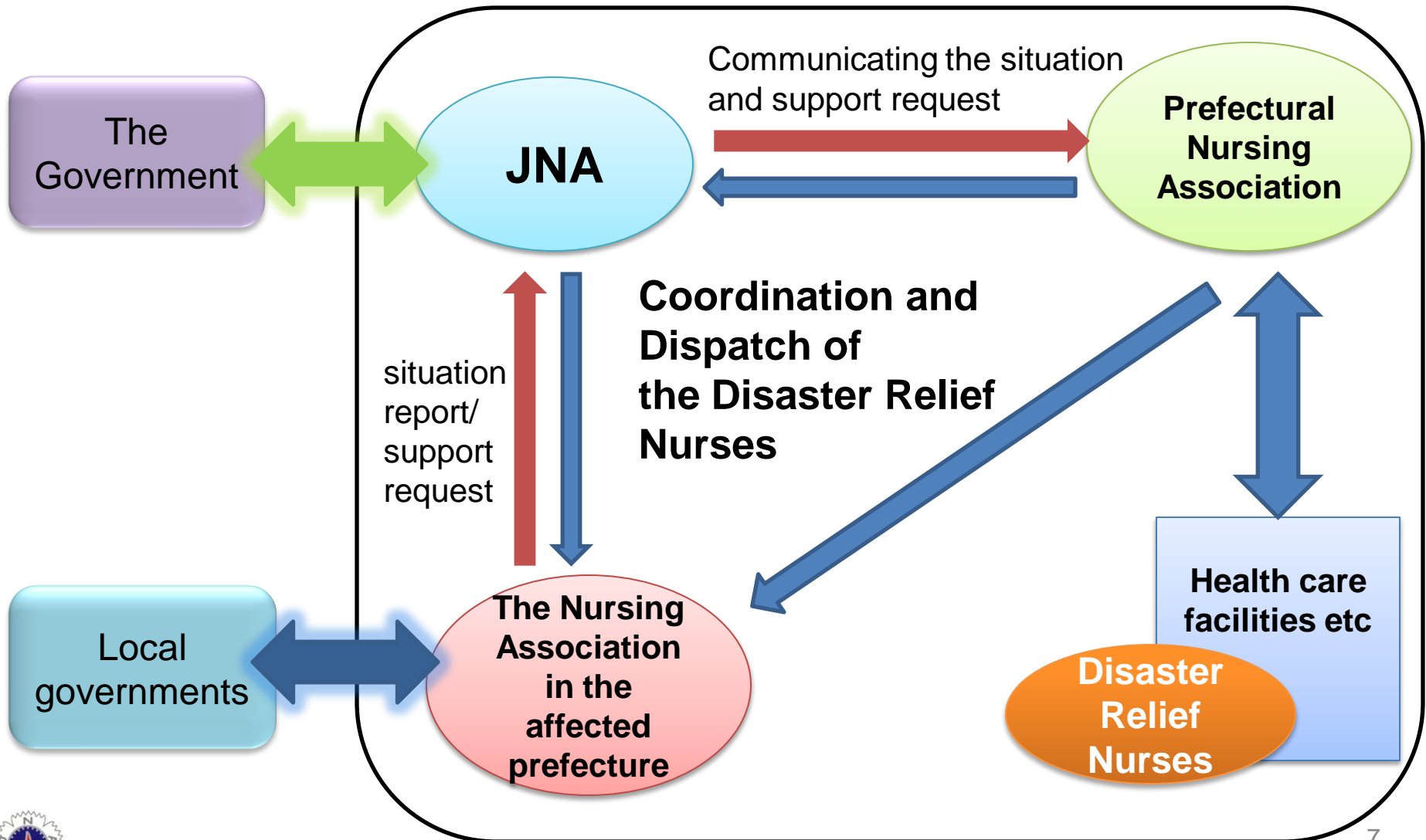
17 January 1995 the Great Hanshin-Awaji Earthquake



Source : City of Kobe, Hyogo Prefecture



JNA Relief Network System in Times of Disasters



2. JNA's activities for 2 years since The Great East Japan Earthquake



The Great East Japan Earthquake

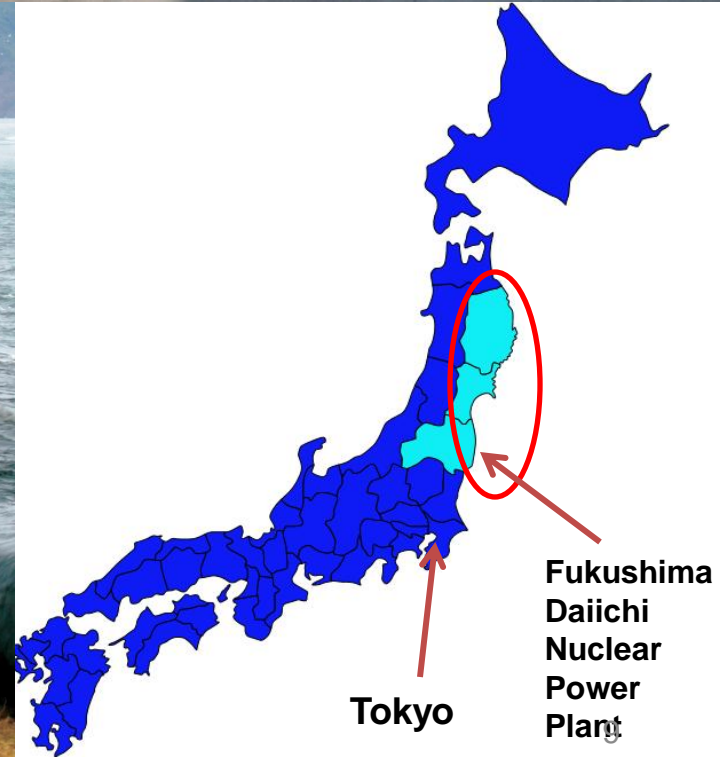
Time and date:

11 March 2011, 14:46(local time)

Scale: **Moment Magnitude 9.0**

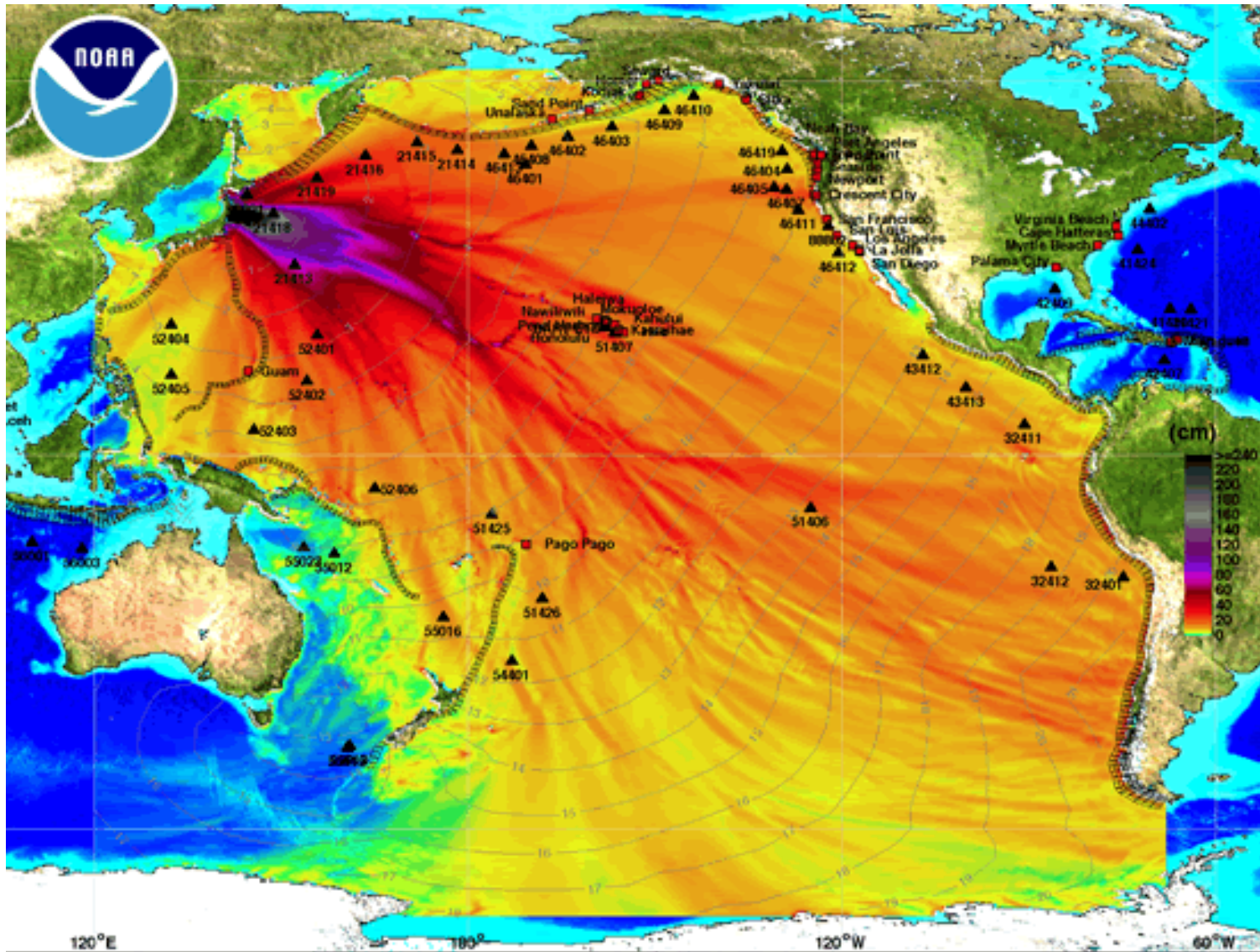
Death toll: **15,880**

The missing: **2,694** (as of 27 February 2013)



Source: City of Miyako , Iwate Prefecture

The tsunami had impact on all over the world



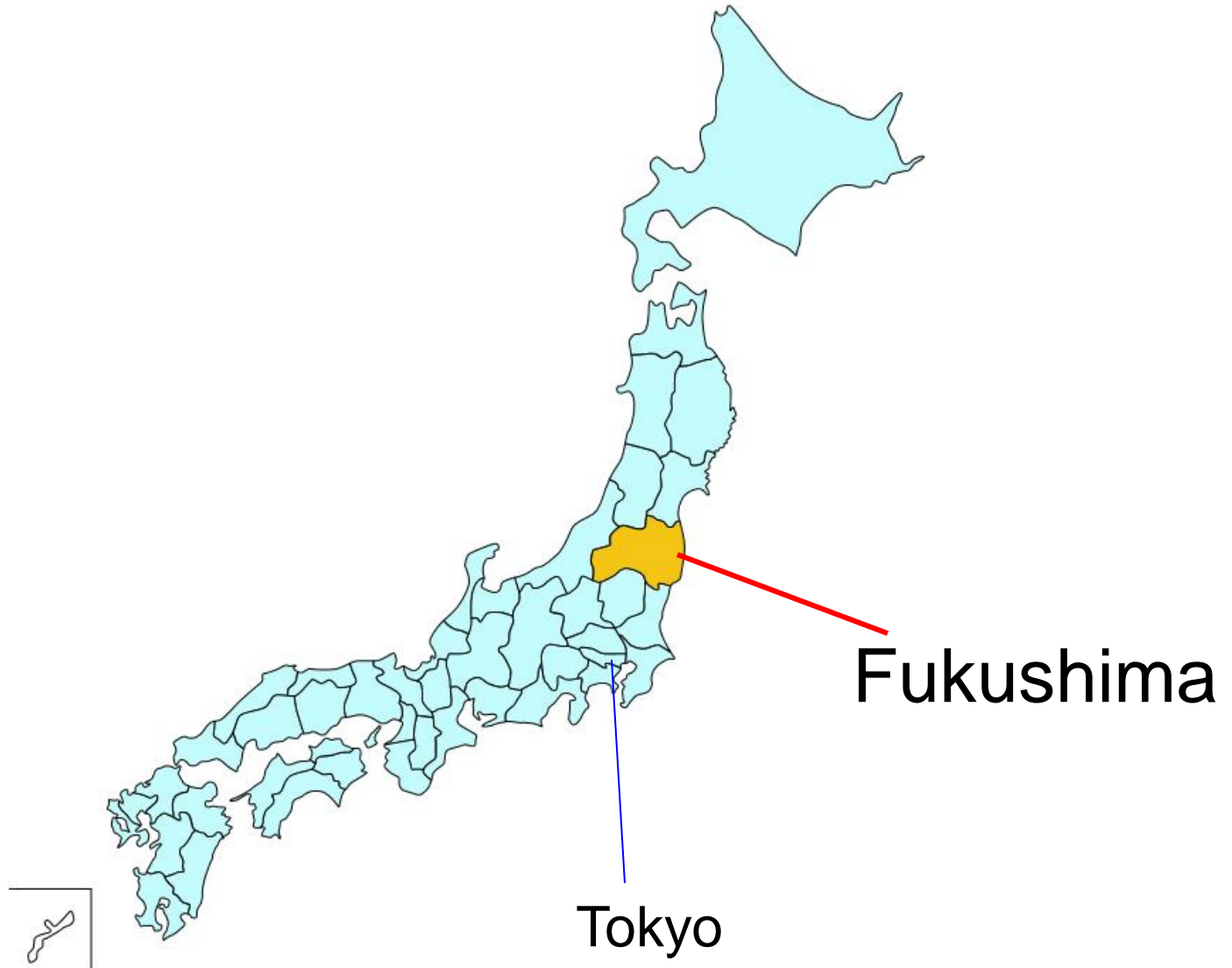
The tsunami debris crossed the Pacific Ocean reached North America, 8,800km away from Japan



Source : Oregon.gov Oregon parks and recreation department
http://www.oregon.gov/oprd/PARKS/pages/agatebeach_dock.aspx



Nuclear Disaster

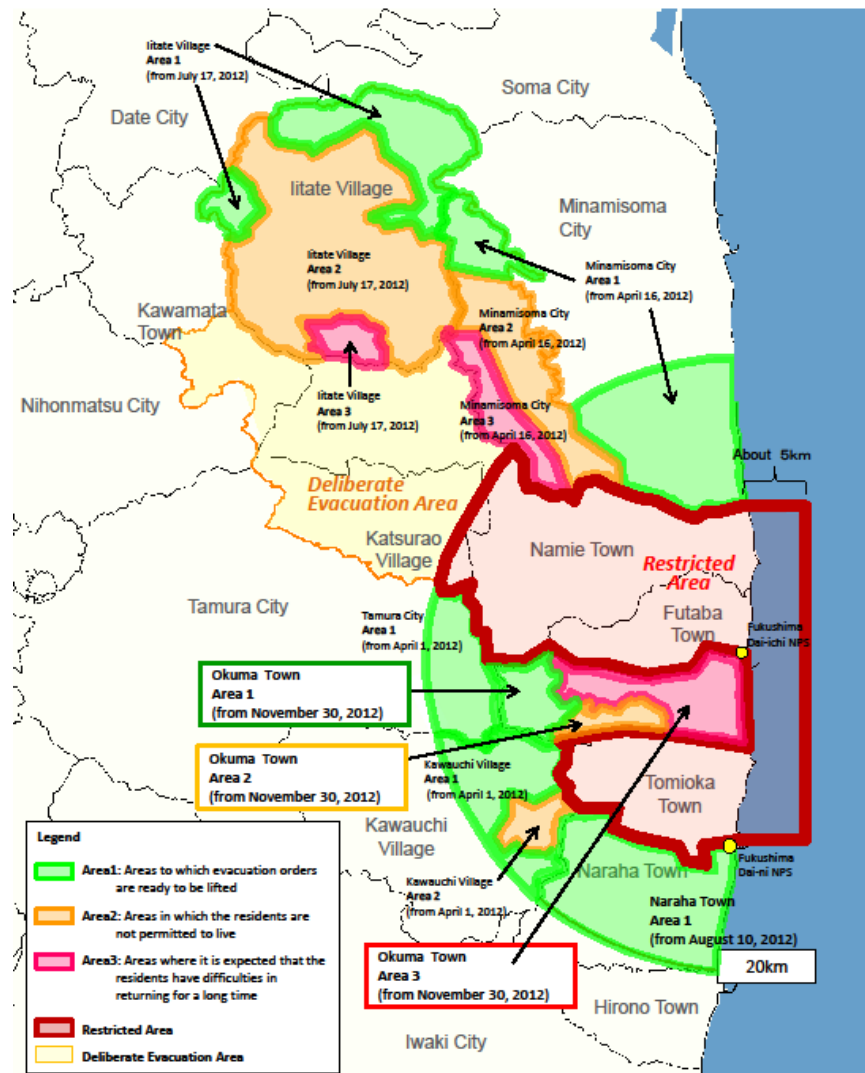


Disaster of Fukushima Daiichi Nuclear Power Plant



Source: Tokyo Electric Power Company

Restricted areas and areas to which evacuation orders have been issued (November 30, 2012)



Source : Ministry of Economy, Trade and Industry

The number of evacuees from the area of evacuation orders
about 109,000



March 11,
2011

JNA's Activities

May 2013

Initial response

Medium-term

Long-term

Dispatch
disaster relief
nurse

Fund-raising for
disaster relief

Survey

Support
for the
recovery
of nursing
function

Refreshment support

Mental health care for nurses

Discussion sessions with
nurse managers

Support to secure nurses

Technical support

Support for local reconstruction activities

Reconstruction & strengthening home care service

Supporting public health nurses at nuclear evacuation area

Policy recommendation

JNA's Activities

Initial Response

Medium-term

Long-term

Dispatch Disaster relief nurse

Fund-raising for disaster relief

Survey

Support for the recovery of nursing function

Refreshment Support

Mental health care for nurses

Discussion session with nurse managers

Support to secure nurses

Technical support

Support for local reconstruction activities

Reconstruction & strengthening home care service

Supporting public health nurses at nuclear evacuation area

Policy Recommendation

Dispatch of Disaster Relief Nurses

Reducing physical & mental burden of affected nurses by taking over their work at the health facilities.



Prevention activities against severe illness and infection outbreak at the evacuation centers for 24-hour



Maintain ADL and preventions care of complications of the elderly

Survey of the condition of the members and Recovery of nursing function

Survey of the condition of members



Urgency need to reconstruct
health care delivery system



Allocation of donation money
aiming to recover nursing function



JNA's Activities

Initial response

Medium-term

Long-term

Dispatch
disaster relief
nurse

Fund-raising for
disaster relief

Survey

Support
for the
recovery
of nursing
function

Refreshment support

Mental health care for nurses

Discussion sessions with
nurse managers

Support to secure nurse

Technical support

Support for local reconstruction activities

Reconstruction & strengthening home care service

Supporting public health nurses at nuclear evacuation area

Policy Recommendation

Refreshment support for affected nurses

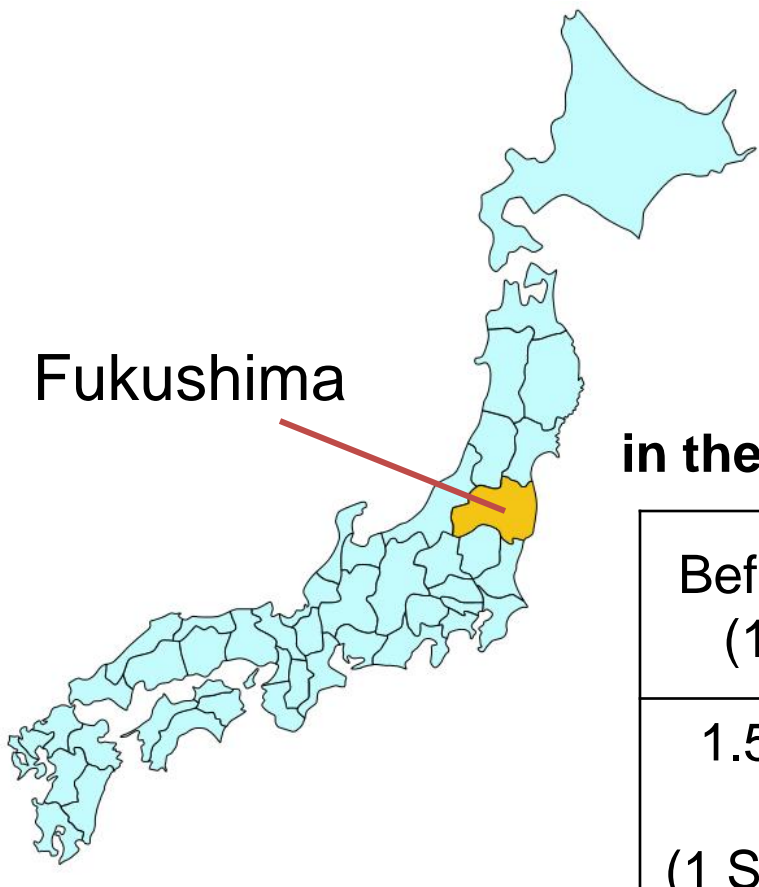
JNA supported 119 nurses to attend the JNA's professional nursing assembly and the social gathering

98% of the participants felt much refreshed

- Took a leave from their daily life
- Catharsis: able to talk about the disaster
- Solidarity: colleagues are with us



Securing nurses



The number of evacuees from the area of evacuation order
about 109,000

As of 20 February 2013

The number of hospital nurses in the area around the nuclear power plant

Before the disaster (1 March 2011)	1,188
1.5-year after the disaster (1 September 2012)	738

Drop by about 40%

source: Fukushima Prefecture



Support to secure nurses

- Utilize current free job-placement website
- JNA public relation newsletter
- Matching job seekers with job offers



Technical support

objectives

- Improve professional practice skills
- Develop a feeling of self-efficacy
- Prevent turn-over

Hospital

- Support by JNA nurses specialized in infection control

Community

- Support by Public health nurses



JNA's Activities

Initial Response

Medium-term

Long-term

Dispatch
disaster relief
nurse

Fund-raising for
disaster relief

Survey

Support
for the
recovery
of nursing
function

Refreshment Support

Mental health care for nurses

Discussion session with nurse
managers

Support to secure nurses

Technical support

Support for local reconstruction activities

Reconstruction & strengthening home care service

Supporting public health nurses at nuclear evacuation area

Policy Recommendation

Support for local reconstruction activities

Support for financial aspect of
local activities

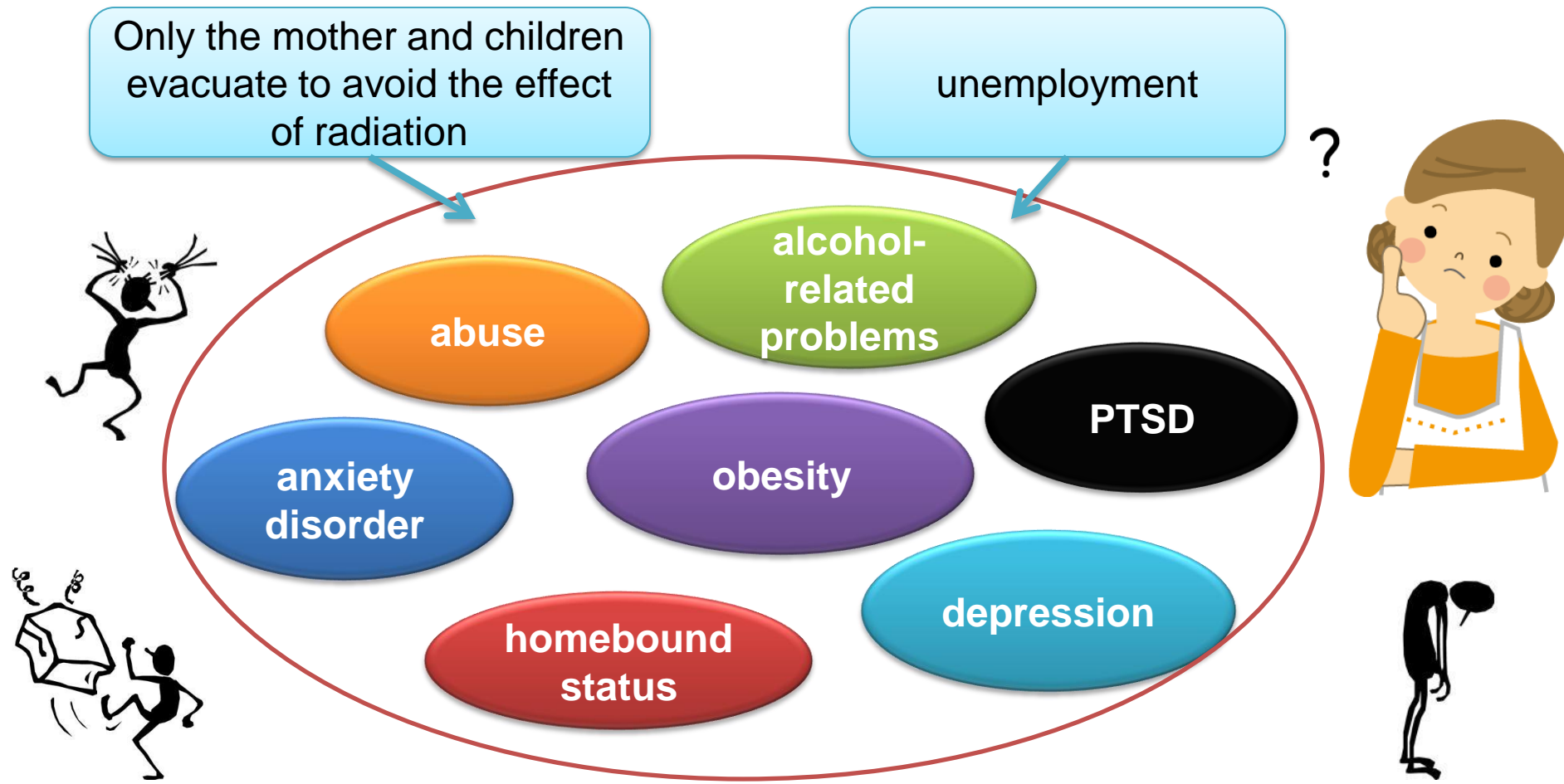


Reconstruction and strengthening home care service

information for visiting
nursing stations to be well
established in the community



Support for activities of public health nurses in the nuclear evacuation area



Health issues facing population in the affected areas 26



3. Preparations for the future



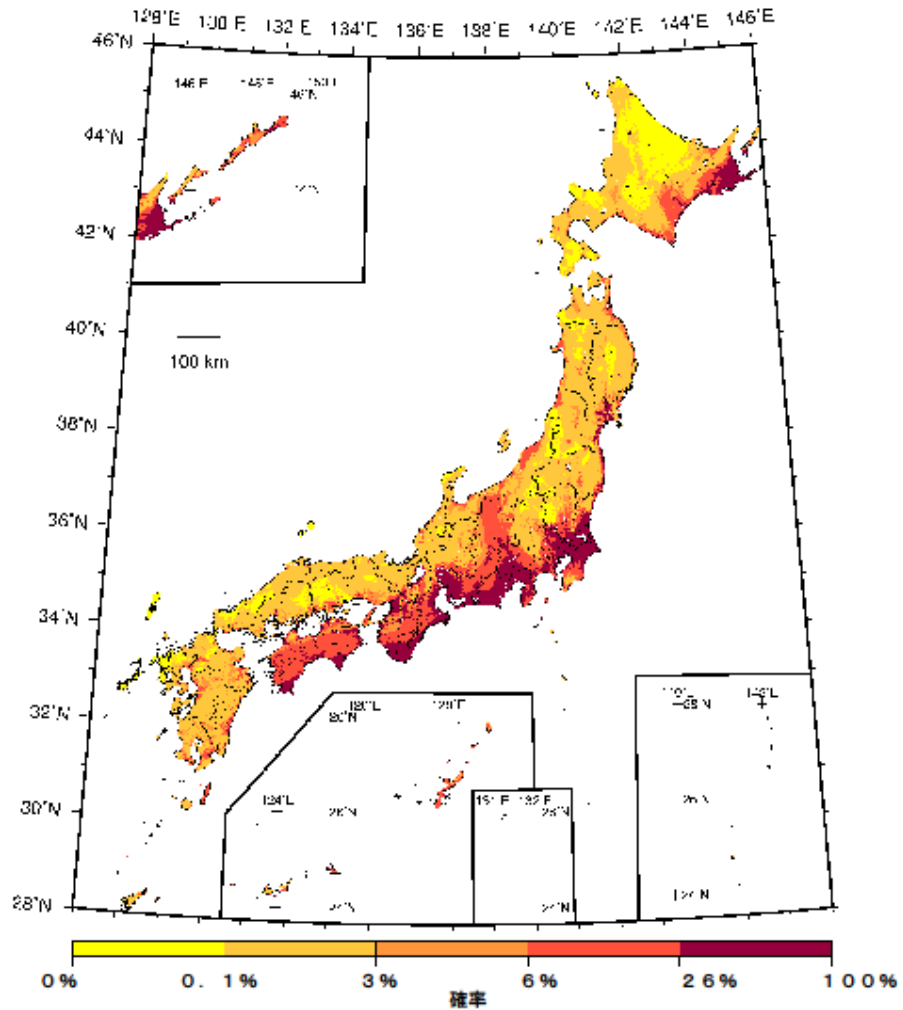
Future of the disaster relief activities

1. Program on Disaster Relief Nursing
2. Revision of the dispatch system
3. Increase of the budget



JNA's Disaster Preparedness

Considering how we will respond when JNA is struck by a huge disaster



Probability of ground motions equal to or larger than seismic intensity 6 Lower, occurring within 30 years



Thank you!

